

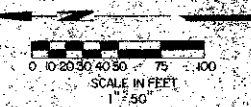
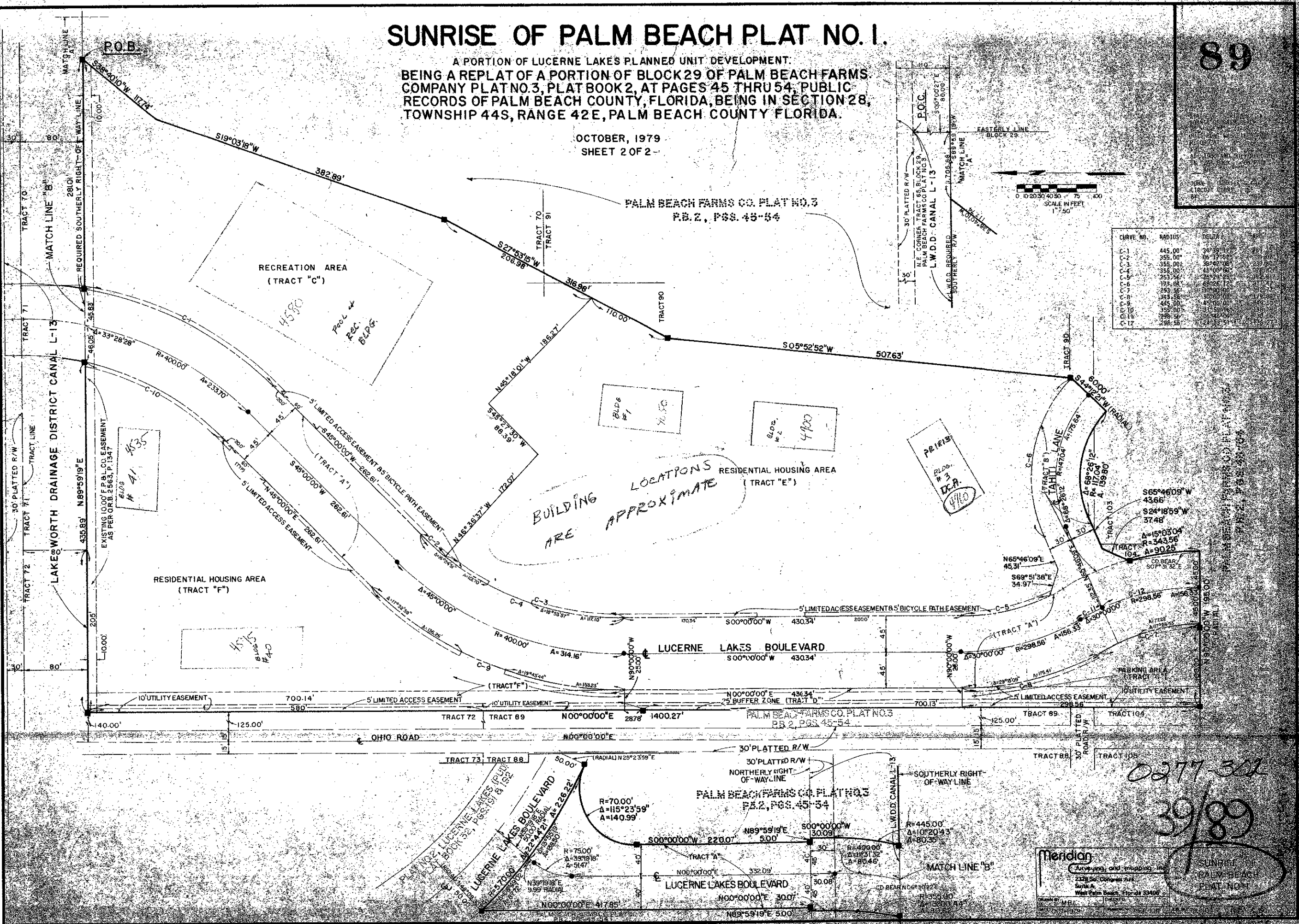
39-89

SUNRISE OF PALM BEACH PLAT NO. 1.

A PORTION OF LUCERNE LAKES PLANNED UNIT DEVELOPMENT.
BEING A REPLAT OF A PORTION OF BLOCK 29 OF PALM BEACH FARMS COMPANY PLAT NO. 3, PLAT BOOK 2, AT PAGES 45 THRU 54; PUBLIC RECORDS OF PALM BEACH COUNTY, FLORIDA, BEING IN SECTION 28, TOWNSHIP 44S, RANGE 42E, PALM BEACH COUNTY FLORIDA.

OCTOBER, 1979
SHEET 2 OF 2

89



CURVE NO.	RADIUS	DELTA	CHORD
C-1	445.00'	34°39'17"	288.00'
C-2	355.00'	86°17'52"	688.00'
C-3	355.00'	38°42'08"	238.00'
C-4	355.00'	45°00'50"	238.00'
C-5	253.36'	68°25'12"	178.64'
C-6	178.64'	68°25'12"	178.64'
C-7	253.36'	30°00'00"	136.70'
C-8	343.56'	50°00'00"	268.00'
C-9	445.00'	45°00'00"	350.00'
C-10	39.00'	90°00'00"	39.00'
C-11	298.56'	10°24'00"	51.72'
C-12	298.56'	10°24'00"	51.72'

0277-302
39/89

Metric
Surveying and Mapping, Inc.
2225 So. Orange Ave.
Suite A
West Palm Beach, Florida 33411
DRAWN BY: M.B.L.
CHECKED BY: J.P.L.

SUNRISE OF PALM BEACH PLAT NO. 1